

# Herbal Support for **Healthy Joints & Circulation**

Keep your patients moving with ease!



# Herbal Support for Healthy Joints & Circulation

Keep your patients moving with ease!

MEDIHERB



MediHerb offers quality herbal products designed to provide anti-inflammatory relief from arthritis, support blood circulation and help maintain overall well-being for your patients.



## Boswellia Complex

An effective anti-inflammatory formulation designed by Professor Kerry Bone and MediHerb's team of experts. It combines high quality herbal ingredients, thoroughly tested to give your patients with arthritic pain an effective, quality product.

- MediHerb's best-selling arthritis relief formula for health care professionals world-wide
- Contains Boswellia, Celery Seed, Turmeric and Ginger to provide temporary relief of the pain and inflammation of arthritis, osteoarthritis and rheumatism

### Each tablet contains:

#### Medicinal Ingredients:

*Zingiber officinale* (Ginger) rhizome 600 mL 1:2 extract, DHE 300 mg  
*Boswellia serrata* (Boswellia) gum resin 300 mg 4:1 extract, DHE 1.2 g (180 mg boswellic acids)  
*Curcuma longa* (Turmeric) rhizome 80 mg 25:1 extract, DHE 2 g (70.4 mg curcuminoids)  
*Apium graveolens* (Celery Seed) fruit 2 mL 1:2 extract, DHE 1 g

#### Non-Medicinal Ingredients:

Calcium phosphate dibasic, sodium starch glycolate, magnesium stearate, silica, cellulose, hypromellose



*Boswellia serrata*

**Dose:** Adults: Take 1 tablet 2 to 4 times daily or as directed by your health care practitioner.

60 Tablets \$26.50 ex Tax

# Herbal Support for Healthy Joints & Circulation

Keep your patients moving with ease!

MEDIHERB®



## Ginkgo Forte

- Help support peripheral circulation and enhance cognitive function and memory in adults

### Each tablet contains:

#### Medicinal Ingredients:

*Ginkgo biloba* (Ginkgo) leaf 0.06 g 50:1 extract, DHE 3 g (24% flavonoid glycosides, 6% terpene lactones)

#### Non-Medicinal Ingredients:

Calcium phosphate dibasic, cellulose, hypromellose, magnesium stearate, sodium starch glycolate

**Dose:** Take 1 tablet 3 times daily or as directed by your health care practitioner. Consult your health care practitioner for use beyond 6 weeks.

60 Tablets \$12.95 ex Tax

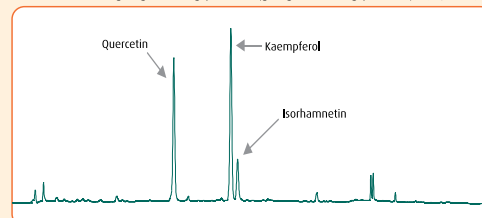


*Ginkgo biloba*

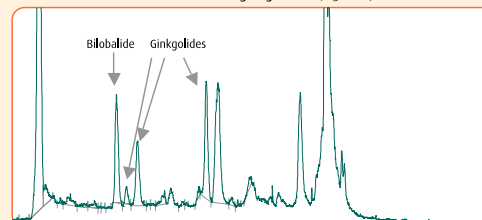
## Ginkgo Quality Issues

The ginkgo flavonglycosides (ginkgo flavone glycosides) of *Ginkgo biloba*, comprising quercetin, kaempferol and isorhamnetin are the phytochemicals most often referred to as indicators of quality and efficacy. However, these compounds are mainly marker compounds which are used to identify the extract. The therapeutically active ingredients are believed to include the ginkgolides and bilobalide, which cannot be tested by normal HPLC methods. They require more sophisticated methods of detection such as Refractive Index (RI), Evaporative Light Scattering Detectors (ELSDs) or Mass Spectrometry (MS). MediHerb uses ELSD detection to accurately quantify the levels of these therapeutically important phytochemicals. The other important group of phytochemicals from Ginkgo are the ginkgolic acids (C13:0, C15:1 and C17:1 on the third figure). These compounds have been identified as contact allergens. The maximum level of ginkgolic acids in *Ginkgo biloba* extracts has been set by the European authorities at 5 ppm. Many poor quality extracts contain levels of ginkgolic acids many orders of magnitude higher than this recommended maximum.

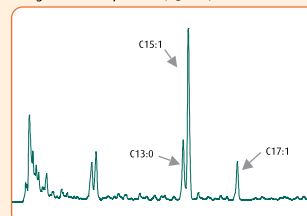
HPLC detection of ginkgo flavonglycosides (ginkgo flavone glycosides) (Figure 1)



LC - ELSD detection of bilobalide and ginkgolides (Figure 2)



Ginkgolic acids by HPLC (Figure 3)





# Herbal Support for Healthy Joints & Circulation

Keep your patients moving with ease!

MEDI  HERB



## Horsechestnut Complex

- Used in herbal medicine to help treat chronic venous insufficiency and varicose veins

### Each tablet contains:

#### Medicinal Ingredients:

*Ruscus aculeatus* (Butcher's Broom) root and rhizome 200 mg 4:1 extract, DHE 800 mg

*Aesculus hippocastanum* (Horsechestnut) seed 200 mg 6:1 extract, DHE 1.2 g (40 mg aescin)

*Ginkgo biloba* (Ginkgo) leaf 30 mg 50:1 extract, DHE 1.5 g (7.3 mg flavonoid glycosides)

#### Non-Medicinal Ingredients:

Calcium phosphate dibasic, silica, cellulose, sodium starch glycolate, magnesium stearate, glucose, carmellose sodium, talc, polydextrose, medium chain triglycerides, ethylcellulose, ammonium hydroxide, oleic acid

**Dose:** Take 1 tablet 2 times daily with food or as directed by your health care practitioner. Enteric coated tablets. Do not crush.

60 Tablets \$28.50 ex Tax



## Vitanox

- Provides antioxidants for the maintenance of good health

### Each tablet contains:

#### Medicinal Ingredients:

*Rosmarinus officinalis* (Rosemary) leaf 2 mL 1:2 extract, DHE 1 g

*Camellia sinensis* (Green Tea) leaf 166.7 mg (83.35 mg catechins)

*Curcuma longa* (Turmeric) rhizome 80 mg (70.4 mg curcuminoids)

*Vitis vinifera* (Grape) seed 50 mg (42.5 mg procyanidins)

#### Non-Medicinal Ingredients:

Calcium phosphate dibasic, cellulose, silica, magnesium stearate, sodium starch glycolate

**Dose:** Adults: Take 1 tablet 1 to 2 times daily or as directed by your health care practitioner. Take 2 hours before or after ingestion of mineral supplements including iron supplements. Do not take simultaneously with meals. Consult your health care practitioner for use beyond 12 weeks.

60 Tablets \$31.50 ex Tax



# Herbal Support for Healthy Joints & Circulation

Keep your patients moving with ease!

MEDI HERB

Additional herbal support for your patients with an active lifestyle:



## Rhodiola & Ginseng

- Used in herbal medicine to help enhance physical capacity/performance (in cases of physical stress), to help support cognitive function and/or reduce mental fatigue (stress) and as supportive therapy of promotion of healthy glucose levels

### Each tablet contains:

#### Medicinal Ingredients:

*Rhodiola rosea* (Rhodiola Rosea) root 150 mg 4:1 extract, DHE 600 mg (3.6% rosavins)

*Panax ginseng* (Korean Ginseng) root 100 mg 5:1 extract, DHE 500 mg (8.4% ginsenosides)

#### Non-Medicinal Ingredients:

Calcium phosphate dibasic, sodium starch glycolate, magnesium stearate, cellulose, hypromellose, glucose.

**Dose:** Adults: Take 1 tablet daily or as directed by your health care practitioner.

**60 Tablets**    **\$24.75** ex Tax

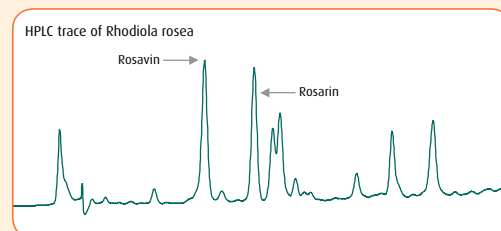


*Rhodiola rosea*

## Rhodiola Quality Issues

*Rhodiola rosea* (*Sedum roseum*) is commonly referred to as Golden Root or Roseroot and grows in dry sandy ground at high altitudes in the arctic regions of Europe and Asia. The freshly cut root has a rose-like odor that has led to its botanical name and one of its common names. The root has been used for centuries in the traditional medicines of Russia and Scandinavia. There are however 16 common species of *Rhodiola* growing in the Eurasian area. Of these, 11 have been tested in animal studies, but only *R. rosea* (17 studies) and *R. crenulata* (1) have been assessed in human trials.

Most of the *Rhodiola* species have been reported to contain the marker compound salidroside and this was originally used to standardize extracts of *Rhodiola rosea*. After more than a decade of research, however, it was shown that the chemical composition of *R. rosea* root is, in fact, different to the other species of the genus *Rhodiola*. Using newly developed methods of analysis, it was shown that *R. rosea* root contains three cinnamyl alcohol-vicianosides: rosavin, rosin, and rosarin that are specific to this species. They are collectively termed rosavins. HPLC offers a ready method to differentiate true *Rhodiola rosea* from the other species offered on the market. The two major rosavins found are rosavin and rosarin, with only very low quantities of rosin.



# Herbal Support for Healthy Joints & Circulation

Keep your patients moving with ease!

MEDI  HERB

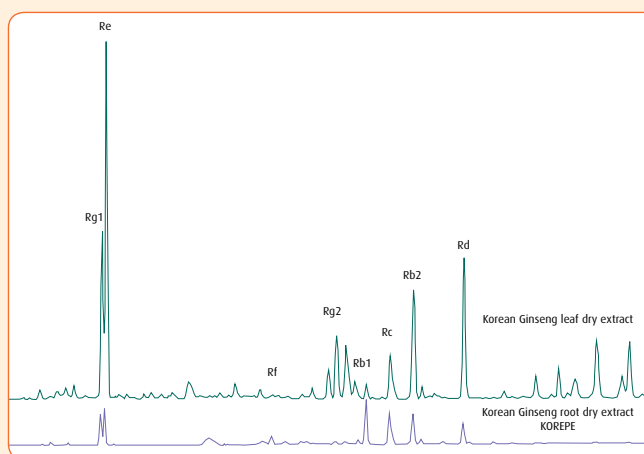
Additional herbal support for your patients with an active lifestyle:

## Korean Ginseng Quality Issues

*Panax ginseng* is a widely used and misunderstood herb. Traditionally the main root of the plant has been preferred for therapeutic use. The other parts of the plant such as the root hairs, leaves, leafstalks, etc are considered inferior and are never used medicinally in the East. However, many herb traders will sell the other plant parts as they are substantially cheaper than the main root. The major marker compounds used to characterize *Panax ginseng* are the ginsenosides which occur in all parts of the plant and if you were to only consider total ginsenosides the main root is not the highest in content. The importance is in the ratio of specific ginsenosides. The European clinical studies were undertaken on extracts manufactured from the main root of *Panax ginseng* which have a particular ratio of ginsenosides. To achieve the clinical results obtained traditionally and supported by clinical trials it is important to use raw material from the correct plant part and the correct species. This is readily achievable using HPLC which easily distinguishes the different preparations.



*Panax ginseng*



% Content									
	Rg <sub>1</sub>	Re	Rf	Rg <sub>2</sub>	Rb <sub>1</sub>	Rc	Rb <sub>2</sub>	Rd	Total
Leaves	1.078	1.524	—	—	0.184	0.736	0.553	1.113	5.188
Leafstalks	0.327	0.141	—	—	—	0.190	—	0.107	0.765
Stem	0.292	0.070	—	—	—	—	0.397	—	0.759
Main root	<b>0.379</b>	0.153	0.092	0.023	<b>0.342</b>	0.190	0.131	0.038	1.348
Lateral roots	0.406	0.668	0.203	0.090	0.850	0.738	0.434	0.143	3.532
Root hairs	0.376	1.512	0.150	0.249	1.351	1.349	0.780	0.381	6.148
Main root dry extract	<b>1.4</b>	2.1	0.6	0.6	<b>2.9</b>	1.9	2.4	1.5	13.4

# Herbal Support for Healthy Joints & Circulation

Keep your patients moving with ease!

MEDI  HERB®



## Tribulus Forte

- Tribulus Forte is one of MediHerb's most popular products
- Tribulus herb is considered to be a source of saponins with tonic properties

### Each tablet contains:

#### Medicinal Ingredients:

*Tribulus terrestris* (Tribulus) aerial parts 245 g 55:1 extract,  
DHE 13.5 g (110 mg furostanol saponins as protodioscin)

#### Non-Medicinal Ingredients:

Calcium phosphate dibasic, cellulose, sodium starch glycolate, magnesium stearate, hypromellose, silica

**Dose:** Take 1 to 2 tablets daily or as directed by your health care practitioner.

60 Tablets \$45.50 ex Tax



*Tribulus terrestris*

## Tribulus Quality Issues

*Tribulus terrestris* is an herb which is endemic to many different geographical zones, from the Mediterranean regions, India, China, South Africa and Australia. Research undertaken by MediHerb has shown that the phytochemical profile of the herb varies depending upon the geographical origin and the plant part utilized. Only Tribulus sourced from the Central European regions of Bulgaria and Slovakia have been found to contain protodioscin, which is an important indicator of quality and efficacy. Additionally only the leaves and stem of the plant contain protodioscin, the fruit does not contain this phytochemical. MediHerb has undertaken this research to ensure that our Tribulus product is of the correct phytochemical profile to ensure phytoequivalence with the Bulgarian clinical trials and therefore optimal therapeutic outcome.

